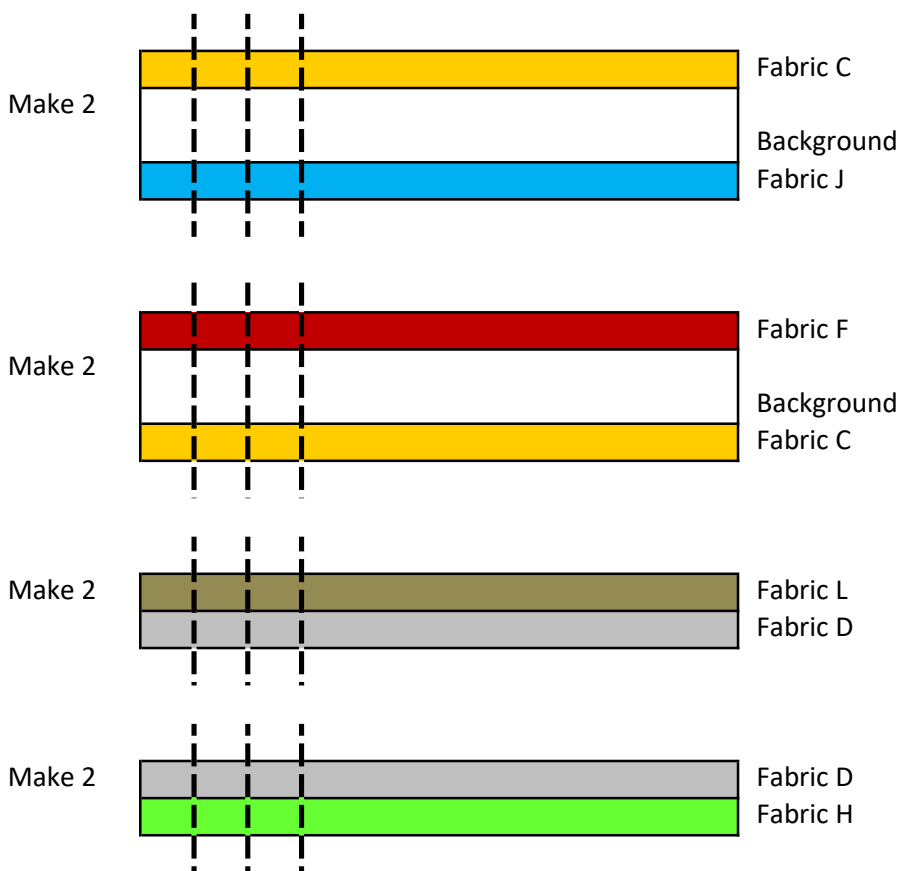


Blue Valley Quilt Guild - 2018 Mystery Quilt - Clue 3

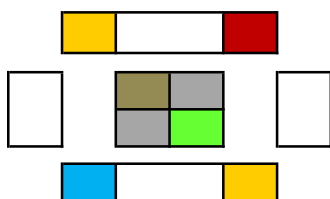
Block A - Make 15 - 6 1/2 inch blocks

- Need:
- 4 - 2 x 21 strips of Fabric C and D
 - 4 - 3 1/2 x 21 strips of Background Fabric
 - 2 - 2 x 21 strips of Fabrics F, H, J and L
 - 30 - 2 x 3 1/2 rectangles of Background Fabric

Make the following strip sets pressing toward the Background Fabric
Subcut into 15 - 2 inch units



Combine units and background pieces to form Block A - Make 15

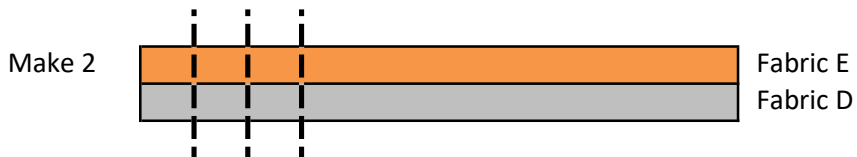
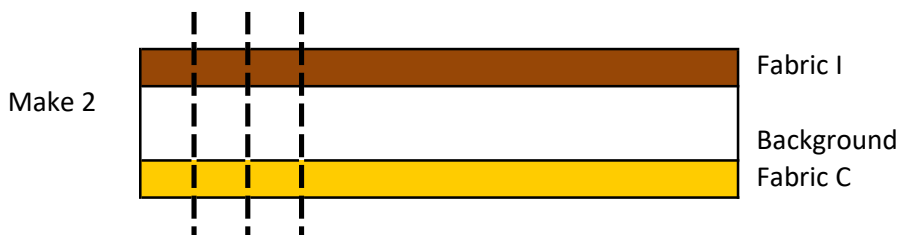
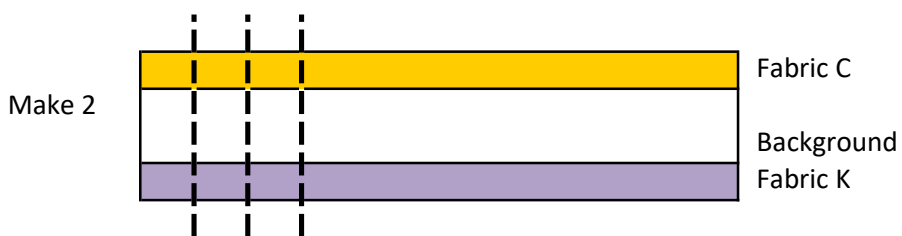


Blue Valley Quilt Guild - 2018 Mystery Quilt - Clue 3

Block B - Make 16 - 6 1/2 inch blocks

- Need:
- 4 - 2 x 21 strips of Fabric C and D
 - 4 - 3 1/2 x 21 strips of Background Fabric
 - 2 - 2 x 21 strips of Fabrics E, G, I and K
 - 32 - 2 x 3 1/2 rectangles of Background Fabric

Make the following strip sets pressing toward the Background Fabric
Subcut into 15 - 2 inch units



Combine units and background pieces to form Block B - Make 16

